

# Kodal Minerals Plc

AGM Presentation

29 September 2023





## DISCLAIMER

The information contained in this document (“Presentation”) and the presentation made to you verbally has been prepared by Kodal Minerals PLC (the “Company”). Kodal Minerals PLC is a UK company quoted on AIM, a market operated by London Stock Exchange plc. This Presentation has not been fully verified and is subject to material updating, revision and further verification and amendment without notice. This Presentation has not been approved by an authorised person in accordance with Section 21 of the Financial Services and Markets Act 2000 (as amended) (“FSMA”) and therefore it is being provided for information purposes only.

While the information contained herein has been prepared in good faith, neither the Company nor any of its directors, officers, agents, employees or advisers give, have given or have authority to give, any representations or warranties (express or implied) as to, or in relation to, the accuracy, reliability or completeness of the information in this Presentation, or any revision thereof, or of any other written or oral information made or to be made available to any interested party or its advisers (all such information being referred to as “Information”) and liability therefore is expressly disclaimed. Accordingly, neither the Company nor any of its directors, officers, agents, employees or advisers take any responsibility for, or will accept any liability whether direct or indirect, express or implied, contractual, tortious, statutory or otherwise, in respect of, the accuracy or completeness of the Information or for any of the opinions contained herein or for any errors, omissions or misstatements or for any loss, howsoever arising, from the use of this Presentation.

The views of the Company’s management/directors and/or its partners set out in this document could ultimately prove to be incorrect. No warranty, express or implied, is given by the presentation of these figures herein and investors should place no reliance on the Company’s estimates cited in this document.

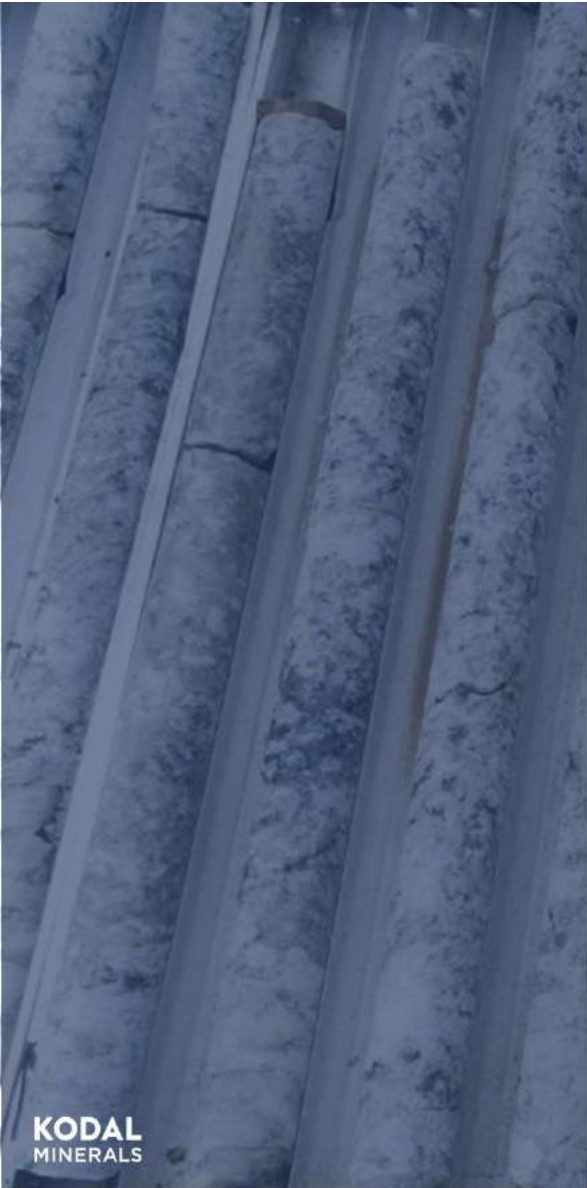
This Presentation may contain “forward-looking statements” that involve substantial risks and uncertainties, and actual results and developments may differ materially from those expressed or implied by these statements. These forward-looking statements are statements regarding the Company’s intentions, beliefs or current expectations concerning, among other things, the Company’s results of operations, performance, financial condition, prospects, growth, strategies and the industry in which the Company operates. By their nature, forward-looking statements involve risks and uncertainties because they relate to events and depend on circumstances that may or may not occur in the future. These forward-looking statements are not guarantees of future performance of the Company and reflect assumptions and subjective judgements by the Company that are difficult to predict, qualify and/or quantify. These forward-looking statements speak only as of the date of this Presentation and the Company does not undertake any obligation to publicly release any revisions to these forward-looking statements to reflect events or circumstances after the date of this Presentation.

This Presentation should not be considered as the giving of investment advice by the Company or any of its directors, officers, agents, employees or advisers. In particular, this Presentation does not constitute or form part of any offer or invitation to subscribe for or purchase any securities and neither this Presentation nor anything contained herein shall form the basis of any contract or commitment whatsoever. No reliance may be placed for any purpose whatsoever on the information or opinions contained in these slides or the Presentation or on the completeness, accuracy or fairness thereof. In particular, any estimates or projections or opinions contained herein necessarily involve significant elements of subjective judgment, analysis and assumptions and each recipient should satisfy itself in relation to such matters.

The distribution of this document in or to persons subject to jurisdictions outside the UK may be restricted by law and persons into whose possession this document comes should inform themselves about, and observe, any such restrictions. Any failure to comply with these restrictions may constitute a violation of the laws of the relevant jurisdiction.

Allenby Capital Limited (“Allenby Capital”), which is authorised and regulated by the Financial Conduct Authority, is acting as the nominated adviser and broker to the Company. Accordingly, the recipients should note that Allenby Capital is neither advising nor treating as a client any other person and will not be responsible to anyone other than the Company for providing the protections afforded to clients of Allenby Capital and nor for providing advice in relation to the matters contained in this Presentation.





## Kodal's Immediate Focus:

“Progressing a fast-track option to realise our goal of becoming the first operational lithium mine in Mali. Through the development of a DMS plant, Kodal has a near-term solution to take full advantage of the continuing buoyant lithium market.”

## COMPANY SNAPSHOT

---

### Advanced-stage lithium development at Bougouni in Mali



Near term lithium producer in Mali at the fully licenced Bougouni project



First lithium product at Bougouni expected in 2024 from a low capex DMS plant.



Producing spodumene concentrate suitable for use in EV batteries



\$117 million financing package agreed and includes offtake for 100% of production



Experienced and proven management team operating together in Mali for many years



Future flotation plant will significantly increase production

## FAST-TRACKING A FULLY FINANCED LITHIUM MINE

### \$100 million financing package paves the way to first production

- Conditional funding package of US\$117.75 million provides full financing for the development and commencement of production at the Bougouni Lithium Project in Mali and support a major exploration and development programme.
  - US\$100 million committed by the Hainan Group, to acquire 51% of Kodal's newly incorporated UK subsidiary, Kodal Mining UK Limited ("KMUK"), to finance the construction of the mine at the Bougouni Lithium Project.
  - US\$17.75 million equity subscription by Hainan Group into Kodal at a price of 0.5p per share, being a premium of approximately 100% to the previous 10-days' VWA.
- KMUK would be fully funded for the US\$65 million capital cost of the DMS development scenario at Bougouni and is targeting delivery of first production within 12 months of receipt of funds.
- The additional funds received by KMUK beyond the DMS funding will be directed to expansion activities to increase the Bougouni Project JORC compliant resource inventory currently at 21Mt @1.11% Li<sub>2</sub>O and extend production beyond the initial four-year mine life.
- The US\$17.75 million raised from the subscription will be used to advance Kodal's portfolio of gold exploration assets in Mali and Cote d'Ivoire, as well as the assessment of new exploration and development opportunities in West Africa.
- Completion of the financing package, including receipt of funds, is conditional upon satisfying various conditions precedent on or before 31 October 2023

January 2023: major financing package

The \$117.75 million funding package has been agreed with Hainan Mining Co. Limited and its wholly owned UK-incorporated subsidiary Xinmao Investment Co. Limited. Hainan is a subsidiary of Fosun International Limited.

Upon completion of the \$17.75 million subscription, Xinmao will be the Company's largest shareholder with a shareholding of approximately 14.81%.

## LITHIUM DEFICIT – WHY BOUGOUNI IS VITAL

First production scheduled for 2024

### HOW MANY MINES DO WE NEED?

As the lithium ion battery revolution gains momentum, **Benchmark** forecasts just how many mines need to be built to keep up with the exceptional volumes of demand for key raw materials expected by 2035.



■ 2022 Supply Vs 2035 Demand

Average Mine/Plant Size

No. of Mines/Plants Needed

Lithium



45,000 t



Kodal Minerals Share Performance  
Comparison to Spodumene SC6  
Long term support for Spodumene Price  
driven by increasing demand





## BOUGOUNI LITHIUM PROJECT MINERAL RESOURCE AND EXPANSION POTENTIAL

- JORC mineral resource of 21.3Mt at 1.11% Li<sub>2</sub>O.
- Kodal completed first drilling campaign since 2019 early 2023 with highly encouraging results:
  - 18m at 1.31% Li<sub>2</sub>O from 42m at the Ngoulana prospect
  - 51m at 1.08% Li<sub>2</sub>O from 78m at the Boumou prospect
  - 36m at 1.29% Li<sub>2</sub>O from 93m at the Boumou prospect
- MRE Update in Progress with great potential at Boumou for expansion and confirmation at Ngoulana

Prospect	Indicated			Inferred			Total		
	Tonnes (Mt)	Li <sub>2</sub> O% Grade	Contained Li <sub>2</sub> O (kt)	Tonnes (Mt)	Li <sub>2</sub> O% Grade	Contained Li <sub>2</sub> O (kt)	Tonnes (Mt)	Li <sub>2</sub> O% Grade	Contained Li <sub>2</sub> O (kt)
Sogola-Baoulé	8.4	1.09	91.9	3.8	1.13	42.8	12.2	1.10	134.8
Ngoulana	3.1	1.25	39.2	2.0	1.12	22.1	5.1	1.20	61.3
Boumou				4.0	1.02	40.4	4.0	1.02	40.4
TOTAL	11.6	1.13	131.2	9.7	1.08	105.3	21.3	1.11	236.5

## ESG

### ESIA approved and community consultation committee working well

- Kodal's full time Malian ESR Manager boasts 25+ years in Mali, including 3 years on the Bougouni Project.
- Designs complete for the upgrade of the existing road to N'gouanala Village which is a major supply line for bringing to market of Cotton and other cash crops in the Bougouni region
- Environmental monitoring in place.
- Community consultation committee established and compensation agreement lodged.



- Successful visit with Fosun and Bougouni Governor.



Site Access Road contract awarded to local contractor, including upgrade to existing road



Visit hosted by EGTF to working mine site



EGTF engineer and surveyor traversing the main access road alignment to gather baseline data for road design; hosted by Kodal's ESR Manager, Mr. Dembélé

## HAINAN MANAGEMENT MOBILISES TO MALI

### Mali Team Hosts Mr Gao and Mr Cai

- Key management representatives from JV partner Hainan Mining mobilised to Mali.
- Site visit conducted with exploration team.
- Hainan Mining remain fully committed to closing the financing.
- Integration of Kodal and Hainan personnel will continue in readiness for finance closure.
- Implementation planning finalised for fast-track approach to take advantage of next dry season.

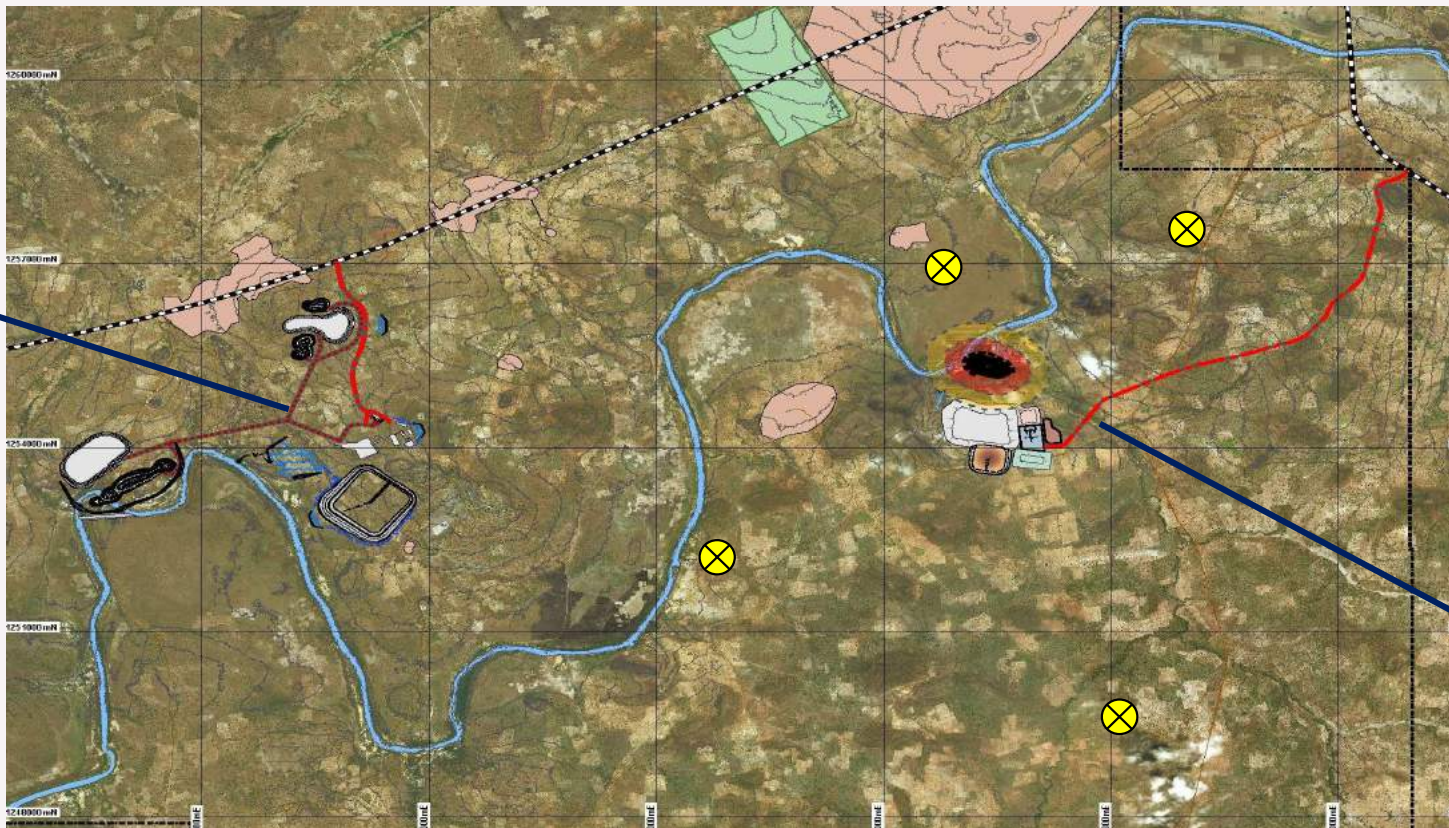




## BOUGOUNI PROJECT AREA

Lithium Deposits, DMS and Flotation Deposits Defined, with Highly Prospective Additional Targets

Future flotation plant funded with cash flow and located close to Sogola-Baoulé and Boumou pits



Access Road alignment to Start Up DMS Plant at Ngoulana.

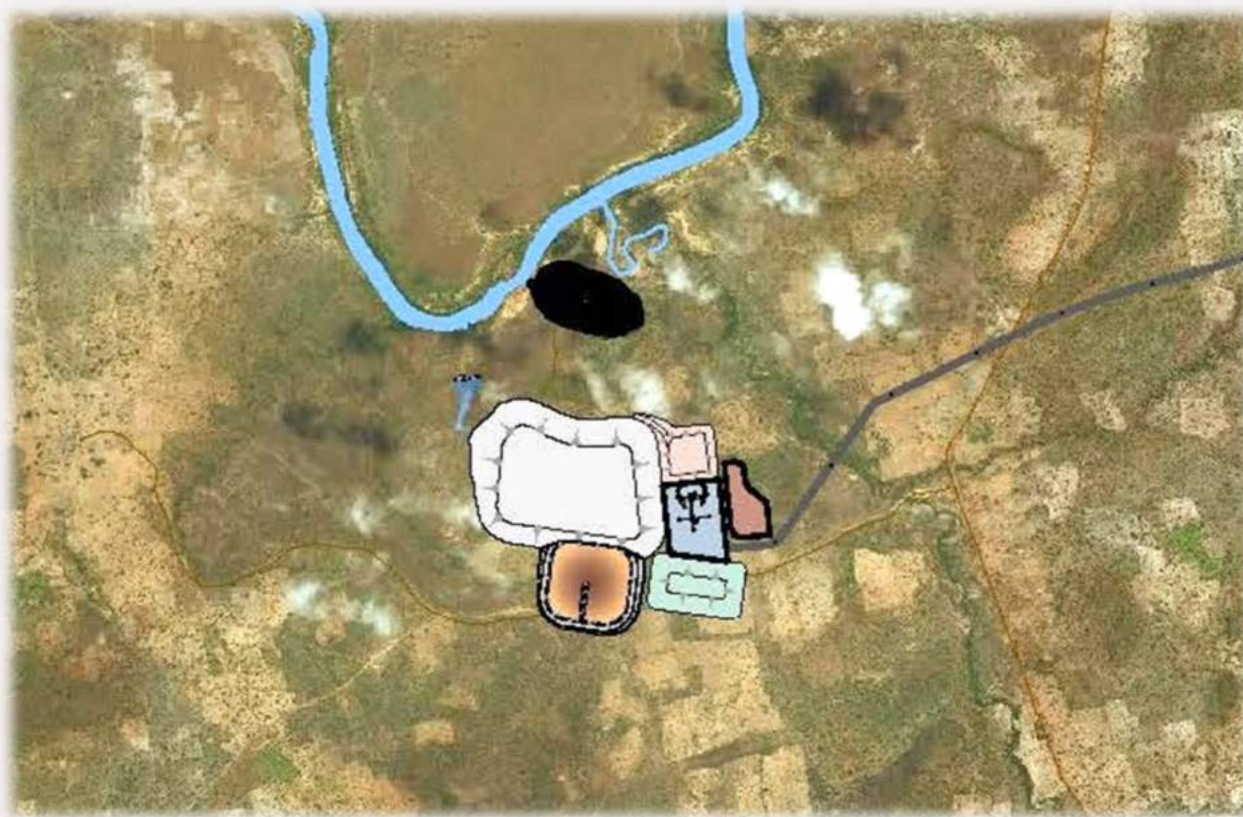
Initial 4 year mine life with potential to extend from nearby un-explored prospects within the mine lease.





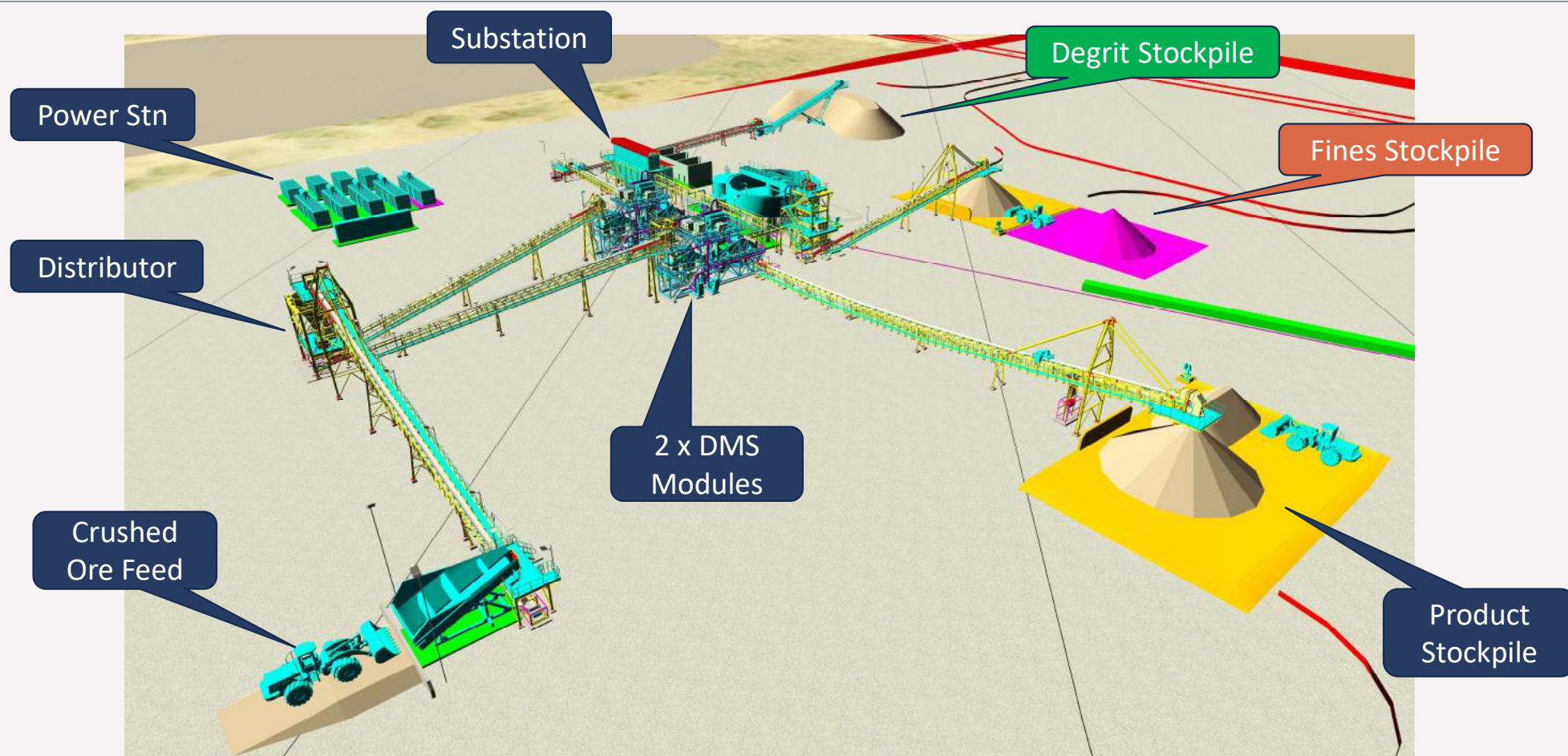
## GOOD ENGINEERING PROGRESS ACROSS ALL DISCIPLINES

Ready to commence purchase of long lead items immediately after funds in place

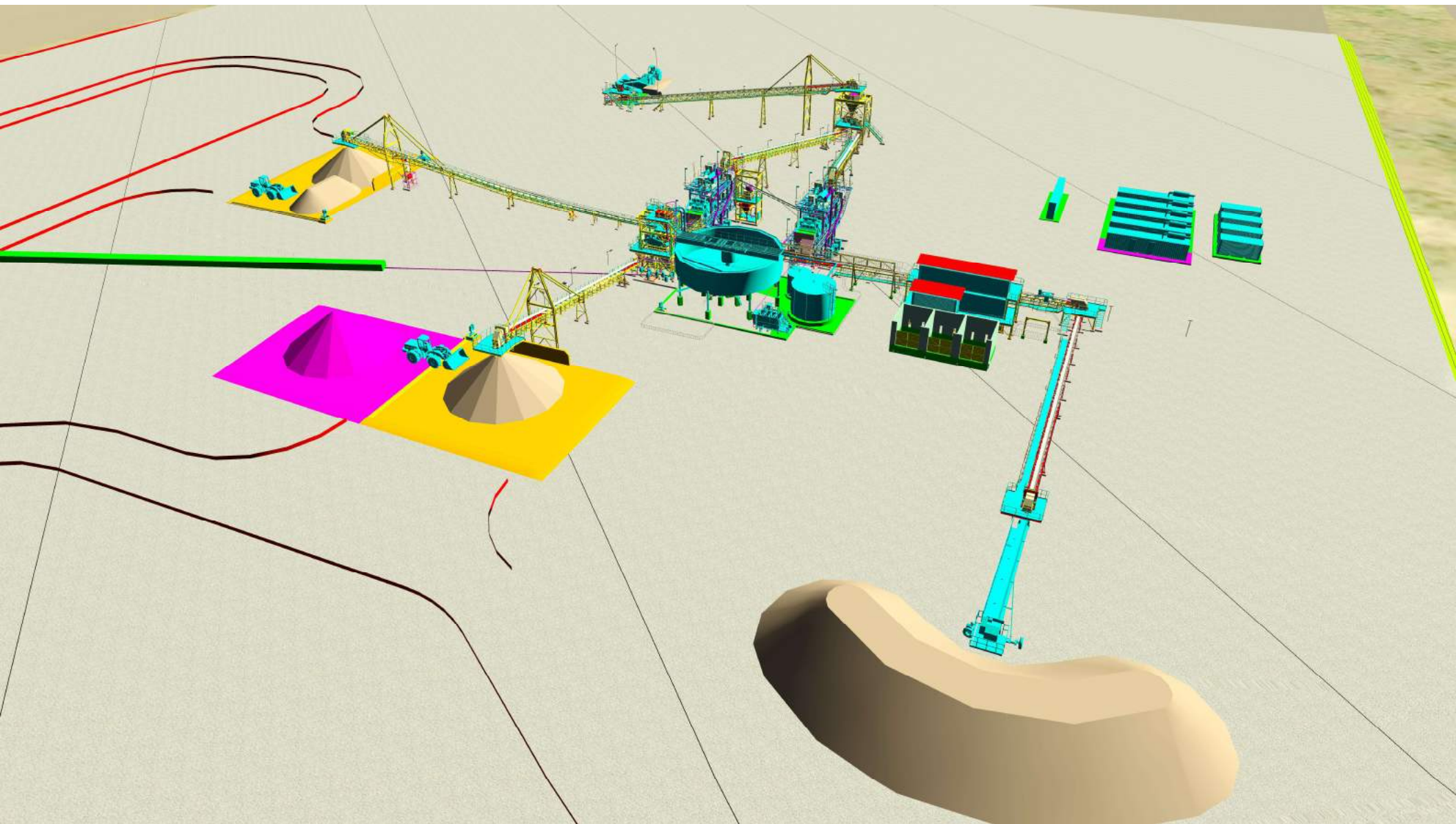


- Modular crushing facility design complete
- Detailed design and layout for plant complete by DRA Global, DMS specialists
- Equipment specifications complete and ready for procurement process
- Open pit design update pending to include updated MRE, mining contractors short-listed, pricing update to follow
- TSF design by Knight Piésold well advanced
- Upgraded access road design complete, benefiting surrounding communities
- Crop compensation negotiations nearing completion to provide access for main road and mine area
- Phased Development Notification submitted DMS → Future Flotation

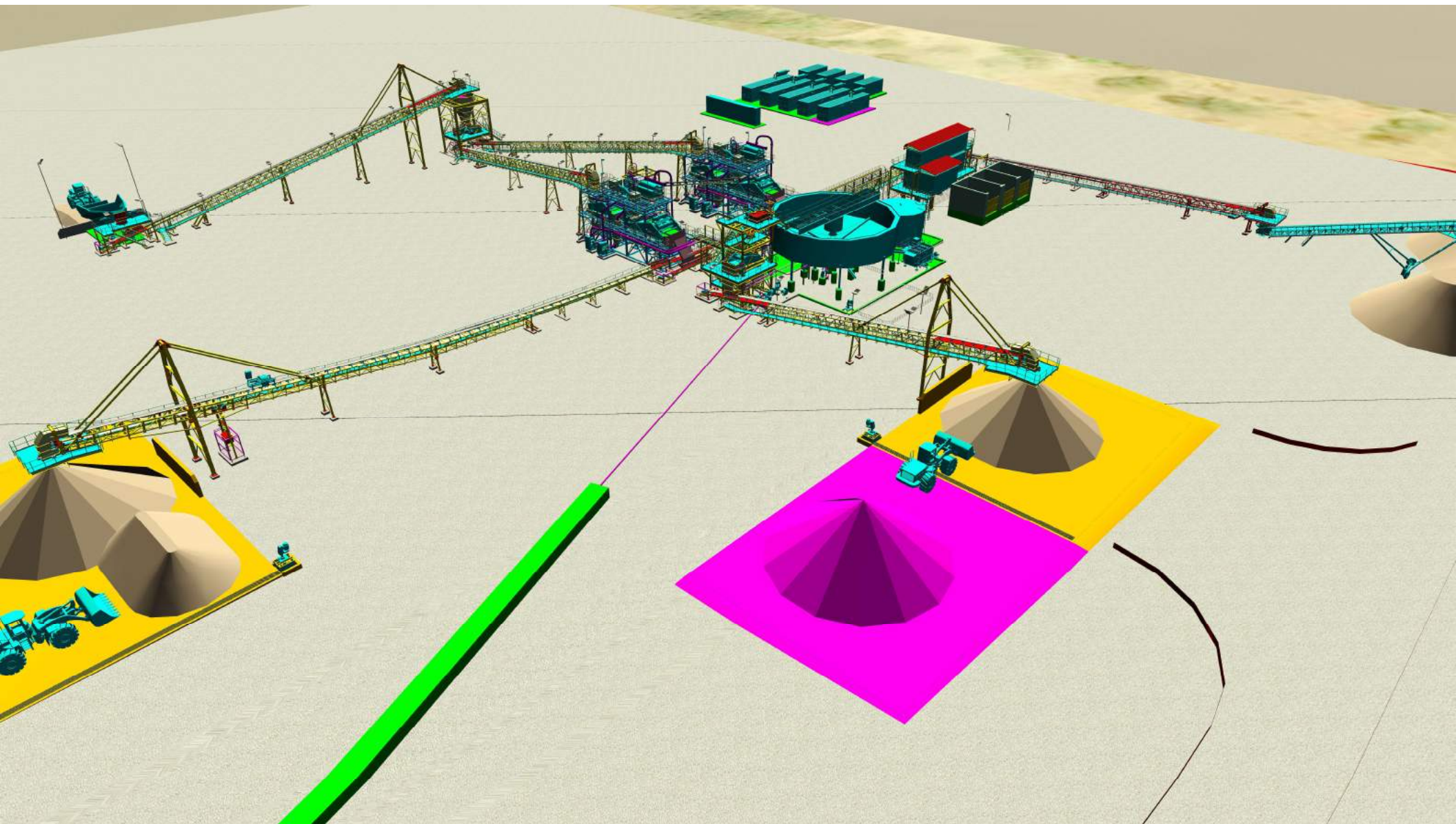
## PLANT DESIGN COMPLETE IN 3D – READY TO COMMENCE PROCUREMENT











## PORT VISIT HOSTED BY TIPSP – SAN PEDRO BULK TERMINAL OPERATOR

---



Kodal have remained in regular contact with the San Pedro Port since 2018.









The Port Authority has established a concession agreement with TIPSP to operate the minerals bulk terminal at San Pedro.

Plans in place by TIPSP will see the San Pedro Port expanded to a capacity of 12 million tonnes of bulk cargo per annum. Dredging to accommodate Panamax vessels









TIPSP proposal formally requested to provide product storage and load out on cargo vessels.

## KODAL MINERALS – A CLEAR PATH TO PRODUCTION & FURTHER DISCOVERIES INEVITABLE

### BLP Current Activity

-  Focus on Funding Transaction Closure
-  US\$117.75M Package Fully Finances Project
-  Phased Development Notification Submitted
-  Commence access road construction Oct-23
-  Resource estimate at Boumou
-  Improved resource definition at Ngoualana
-  Mali DNGM confirmed the mining licence as valid and administered to 2019 Mining Code
-  Plant design complete in readiness to commence purchase of long leads

### BLP Upcoming Activity

-  Final open pit Reserve at Ngoualana
-  Significant Resource upgrade at Boumou
-  Bougouni community development plan
-  First phase land compensation program
-  Complete access road construction Jan-24
-  Purchase long leads & start the build phase
-  Finalise mine development layout & infrastructure design
-  Expansion drilling targeting additional mineralisation: Boumou; Kola Bougouni Sth



## THANK YOU FOR ATTENDING

BERNARD AYLWARD  
Chief Executive Officer

---

E: [bernard@kodalminerals.com](mailto:bernard@kodalminerals.com)

CANACCORD GENUITY  
Joint Broker

---

E: [jasensio@cgf.com](mailto:jasensio@cgf.com)

SP ANGEL  
Financial Adviser & Joint Broker

---

E: [richard.parlons@spangel.co.uk](mailto:richard.parlons@spangel.co.uk)

ST BRIDES PARTNERS  
Financial PR & IR

---

E: [susie@stbridespartners.co.uk](mailto:susie@stbridespartners.co.uk)

